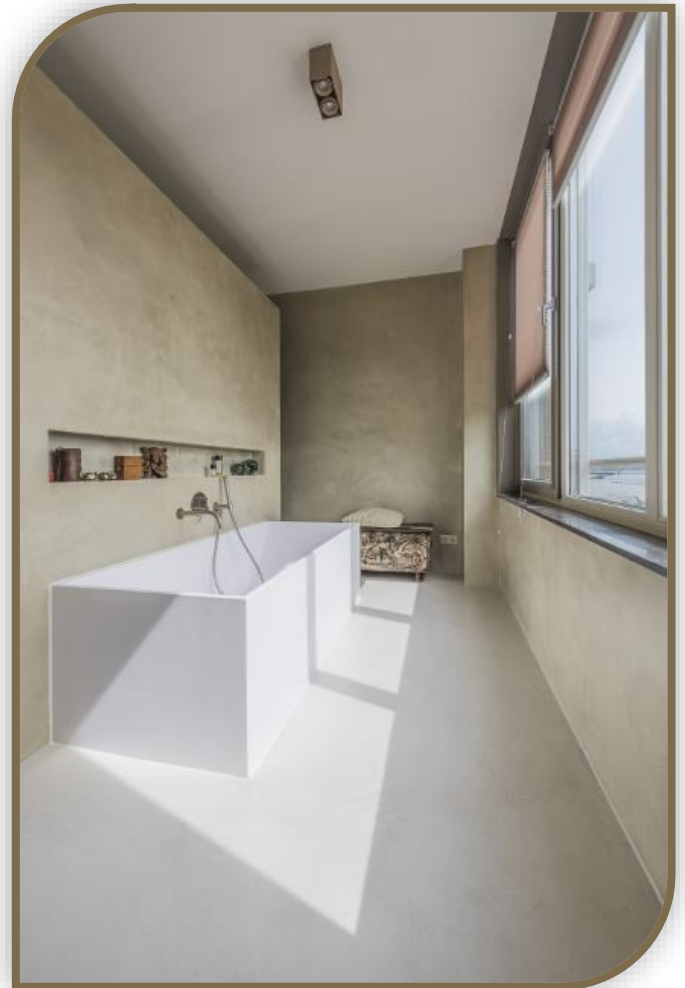


# Manual Beton Ciré Unique = WALL FINISH =

*The power of three thick layers  
applied in one layer!*

*1x plastering – 1x coating –  
done!*



**Also watch our instruction video and manuals online!**

**[www.betoncireunique.nl/instructie](http://www.betoncireunique.nl/instructie)**



Beton Ciré Unique  
Rosbayerweg 1251521 RW  
Wormerveer  
info@betoncireunique.nl  
075-6287311

**[www.betoncireunique.nl](http://www.betoncireunique.nl)**



## Table of contents

TIPS & TRICKS FROM THE EXPERTS.....	2
PREPARATION OF THE SUBSTRATE.....	2
LET'S GET STARTED.....	4
STEP 1: CLEAN AND DEGREASE THE SURFACE.....	4
STEP 2: PRIME SUBSTRATE.....	4
STEP 3: APPLYING A KIMBAND.....	4
STEP 4: PRIMING THE KIMBAND.....	4
STEP 5: SET UP CORNER PROFILES IN THE OUTER CORNERS.....	5
STEP 6: REINFORCE WALL AND CORNERS WITH WEAPON MESH.....	5
STEP 7: APPLYING THE LEVELLING LAYER.....	5
STEP 8: SANDING SMOOTHING LAYER.....	5
STEP 9: APPLYING MICROCEMENT UNIQUE.....	6
STEP 10: CUTTING OFF (MISTING AND SMOOTHING).....	6
STEP 11: REMOVE MASKING TAPE.....	6
STEP 12: FINISHING OUTSIDE CORNERS.....	7
STEP 13: POLISHING/SANDING MICROCEMENT.....	7
STEP 14: CLEANING WALLS.....	7







STEP 15: APPLYING A FINISHING COATING (IN JUST ONE LAP).....  
7

#### MOST COMMON MISTAKES TOP

17.....9

#### Also available online:

-  Preparation instructions for the subsurface + construction of secondary walls and partitions
-  Blade Finishing Guide
  -  Instructional film wall finishing
  -  Instruction film sheet finishing



Jump to: <https://www.betoncireunique.nl/instructie/>

## TIPS & TRICKS FROM THE CONNOISSEURS

This manual has been written together with our processors, who have over ten years of experience with this special product. Not only do they have experience with the product itself, but they also know better than anyone that the use and application of the right materials has a positive influence on the end result.

**Therefore, take the time to read through this guide and use it to your advantage.**

**Give yourself time to read this manual carefully.**

**This only takes 10 minutes but promotes the end result.**

**Stick to the instructions for best results!**

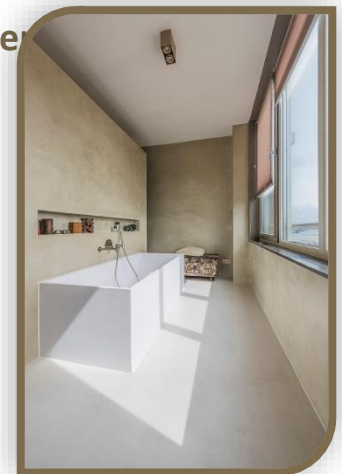
Before you start, go through our **TOP 17 most common mistakes**, then you won't be able to make them again. We also explain why we recommend some products and not others. See the last two pages.

## PREPARATION OF THE SUBSTRATE

In this manual, we have assumed that the room in question is ready for plastering.

All our manuals can be found on our website (WALL, TOP and PREPARATION SURFACE).

There are also instructional videos for applying Beton Ciré to walls and tops.



[www.betoncireunique.nl/instructie](http://www.betoncireunique.nl/instructie)



## GET STARTED

In this guide, we'll explain step by step how to build up the layers: from priming to applying the coating. Go to work according to the instructions, so you build up the substrate and finishing layer properly. It is important that the surface is stable, tear, free of dust and grease.

### STEP 1: CLEANING AND DEGREASING THE SURFACE

- Remove dust from the surface and degrease well with a degreaser dissolved in hot water.

### STEP 2: PRIMER SUBSTRATE

Ground type:	Type of primer:
Plasterboard / secondary wall	Eurocol 099 (for absorbent substrates)
Gibo/Gibs Blocks	Eurocol 099 (for absorbent substrates)
Fermacel	Eurocol 099 (for absorbent substrates)
Concrete	Eurocol 099 (for absorbent substrates)
Existing tiling	Schonox SHP (for non-absorbent substrates)
Green Particleboard	Schonox SHP (for non-absorbent substrates)
Waterproof glued board	Schonox SHP (for non-absorbent substrates)
<b>For good adhesion, prime thoroughly dry!</b>	

### STEP 3: INSTALLING KIMBAND

- When primer is dry, the kimbant can be applied to reinforce the corners in all inner corners and the horizontal corner in the wet area;
- In the wet area, all horizontal corners are provided with kimbant to prevent rising damp from the floor to the wall.
- Lubricate the kimbant with kimcoat.

### STEP 4: KIMBAND PRIMING

- After drying, prime the kimbant thoroughly with primer Schonox SHP (for non-absorbent substrates) so that the pre-treatment cement can adhere optimally to the bilge tape.

## STEP 5: SETTING CORNER PROFILES IN THE OUTER CORNERS

- |                                                                                                                                                    |
|----------------------------------------------------------------------------------------------------------------------------------------------------|
| <ul style="list-style-type: none"> <li>▪ Use corner profiles made of stainless steel or aluminum, not iron to prevent rust in the wall.</li> </ul> |
| <ul style="list-style-type: none"> <li>▪ Attach the profiles perpendicular to the corner with some Ardex R1.</li> </ul>                            |

## STEP 6: REINFORCE WALL AND CORNERS WITH WEAPON MESH (WITH AUTEX OUTER MESH)

- |                                                                                                                                                                          |
|--------------------------------------------------------------------------------------------------------------------------------------------------------------------------|
| <ul style="list-style-type: none"> <li>▪ Apply a thin layer of Ardex R1 of 1 to 2 mm</li> </ul>                                                                          |
| <ul style="list-style-type: none"> <li>▪ Stick the custom-made weapon mesh into the mortar, push the mesh as flat as possible against the wall with a trowel.</li> </ul> |
| <ul style="list-style-type: none"> <li>▪ Stick mesh in the entire surface to be pieced.</li> </ul>                                                                       |
| <ul style="list-style-type: none"> <li>▪ Also run the mesh through the corners for extra reinforcement of the corners.</li> </ul>                                        |
| <ul style="list-style-type: none"> <li>▪ Overlap each new strip of mesh by 10 cm for extra strength.</li> </ul>                                                          |

## STEP 7: APPLYING LEVELLING LAYER

- |                                                                                                                                                                                                                                                                                                                                                        |
|--------------------------------------------------------------------------------------------------------------------------------------------------------------------------------------------------------------------------------------------------------------------------------------------------------------------------------------------------------|
| <ul style="list-style-type: none"> <li>▪ Now plaster the mesh and kimbard with a layer of <b>at least 3 to 4 mm</b> cement mortar, make sure that an even layer is created;</li> </ul>                                                                                                                                                                 |
| <ul style="list-style-type: none"> <li>▪ Allow the material to dry thoroughly;</li> </ul>                                                                                                                                                                                                                                                              |
| <ul style="list-style-type: none"> <li>▪ <b>Please note: drawing of mesh or tile pattern after drying in the applied layer indicates that the underlayer is too thin and will also be visible in the final result of the Beton Ciré. Then, after drying, apply an extra layer of at least 2 mm cement mortar and let it dry thoroughly.</b></li> </ul> |

## STEP 8: SANDING SMOOTHING LAYER

- |                                                                                                                                                                                   |
|-----------------------------------------------------------------------------------------------------------------------------------------------------------------------------------|
| <ul style="list-style-type: none"> <li>▪ After the cement has dried, it is advisable to lightly sand the flattening layer to remove any deposits and protruding parts;</li> </ul> |
| <ul style="list-style-type: none"> <li>▪ After sanding, remove all the dust for optimal adhesion of the Beton Ciré.</li> </ul>                                                    |



## STEP 9: APPLYING CIRÉ UNIQUE CONCRETE

- The ideal processing temperature of Beton Ciré Unique is between 15 and 20 degrees with sufficient ventilation. **Do not process below 15 degrees!**
- At higher temperatures and a lot of ventilation, the drying time accelerates. Then mix smaller quantities and store the cement and resin in a cool place.
- When the levelling layer is completely dry, the Beton Ciré can be applied.
- Apply Beton Ciré Unique directly, without primer, over the cement layer. This also applies to lime-bound substrates, do not prime! Beton Ciré Unique always needs an absorbent substrate.
- A wall surface must be finished in one go. If you stop in between, there will be permanent color differences in the transitions.
- Multiple walls can be lubricated at the same time, but don't work wet against wet. Allow at least 1 hour of drying time before starting work on the adjacent wall.

- Measure the number of square meters that can be plastered within 45 minutes. After that, it hardens in the bucket and can no longer be processed.
- Prepare the cement with the resin. Follow the packaging for the correct proportions.
- Please note: for plastering **1 m<sup>2</sup> wall**, a total of **1 kg of mass is spread evenly over 1 m<sup>2</sup> wall**.
- Process the Beton Ciré from top to bottom on the wall.
- Then stroke from different directions with the spackling knife for more Spanish lag, creating the characteristic look.
- Inner and outer corners are not healed at the same time (wet in wet!)
- Allow one hour for the finished wall to dry before connecting with a new layer in the inner or outer corner. This also applies to niches.
- **Useful tip:** keep a cup of cement ( $\pm$  150 grams) to touch up any damage at a later date. Always repair damage immediately to prevent further damage.

## STEP 10: CUTTING OFF (MISTING AND SMOOTHING)

- Fill a plant sprayer with resin.
- After  $\pm$  20 to 30 minutes, the first spots start to dry and you can start to fatten up.
- When cutting off, any holes are closed.
- In addition, the Beton Ciré is finished more tightly and less sanding is required.
- Always work from top to bottom. See also our instructional video at minute 5:35 for supporting footage.
- Do not spray too much resin; This can cause blisters and sagging.
- Remove any blisters, sags or leak marks immediately to prevent drawing in the wall.

## STEP 11: REMOVE MASKING TAPE

- Immediately after cutting off, remove the applied masking tape for the tightest possible end result.



## STEP 12: FINISHING OUTSIDE CORNERS

About 20 minutes after milling, the excess Beton Ciré in the outer corners is hard enough to be cut along the profile with a knife.

Repeat this operation on the other side of the corner as well.

## STEP 13: POLISHING/SANDING MICROCEMENT

- After ± 12 hours, at a room temperature of 15 to 20 degrees and sufficient ventilation, the Beton Ciré Unique is dry and can be sanded.
- To do this, use an eccentric sander and 120 grit sandpaper.
- The inner and outer corners are sanded by hand.

## STEP 14: CLEANING WALLS

- Remove any dust from the wall, preferably with a brush vacuum cleaner, to prevent dust from entering the finish coating.

## STEP 15: APPLYING A FINISHING COATING (IN JUST ONE COAT!)

- First, ensure a clean working environment: walls and floor must be clean and dust-free.
- Cover the floors, ceiling and any frames with masking tape
- Shake or mix coated bottle well before use.
- Pour the coating into a paint tray, note: the coating can be processed for about 30 minutes.
- Only use the roller supplied!
- Do not apply the coating too thickly and roll it out well in different directions, this will fill holes and irregularities with the coating.
- The inner corners are filled with the side of the roller and rolled out well.
- To prevent excess coating and deposits, the surface is rolled within 15 minutes.
- Do this with the same roller, but without adding a new coating.
- The post-rolling is done from different directions. See also our instructional video at minute 7:10 for supporting footage.
- Too much coating in the corners can turn white after drying!
- Be careful with dust; The coating will stick for about 10 hours.
- Remove the masking tape as soon as the coating is no longer sticky.
- The coating is ready for use after 24 hours and can be assembled if necessary.
- After ± 28 days, the material is fully cured.





## WHY AND WHY NOT?

### Why .....

#### **AN ABSORBENT SUBSTRATE**

Beton Ciré needs an absorbent substrate for a beautiful end result.

When the substrate is not absorbent, unwanted stains and discoloration occur in the end result.

Therefore, ALWAYS make sure you have an absorbent surface.

#### **LEVELLING MORTAR: Ardex R1**

For the best results, we recommend using Ardex's cement mortar. The white mortar is the most ideal mortar: Ardex R1.

This white levelling mortar provides a good surface and the most beautiful end result and is suitable for all colours.

If you choose a different brand, this could affect the end result. When using a grey mortar, you run the risk of colour breakdown of the substrate, when using a light colour of Beton Ciré. In that case, we recommend that you always apply a thin layer of white mortar.

#### **KIMBAND**

Use this wherever you can possibly expect movement (standing corners, inside corners, horizontal corners only in wet room (preventive for rising damp from the floor), transition of two different materials

#### **REINFORCING MESH**

For an even stronger surface, we always recommend using weapon mesh. Overlap the mesh in the corners for extra strength. We recommend Autex Outdoor Mesh.

### Why not.....

#### **\*GREEN GYPSUM / HYDRO GYPSUM**

**We do not recommend this because:** this material can enter into an undesirable chemical reaction with Beton Ciré, which can cause stains and detachment. Green drywall is not included.

**\*We do not recommend plaster in the bathroom because:** in the event of damage, the material, unlike a cement-bound surface, absorbs moisture, which causes the material to detach and irreparable damage can occur.

**TIP: watch our instruction video at: <https://www.betoncireunique.nl/instructie/>**



## MOST COMMON MISTAKES TOP 17

1. **No absorbent substrate applied.**  
Result: less even, chance of stains and a strongly mottled / restless end result.
2. **Kimband not pre-ironed after application.**  
Consequence: detachment
3. **Standing inner corners not equipped with kimband / weapon mesh**  
Consequence: cracking
4. **Horizontal corner not equipped with kimband**  
Result: moisture stains due to rising damp from the floor or blisters.
5. **Levelling layer insufficiently dry:**  
Result: detachment, blisters, cracks, cracks, dark spots in Ciré concrete  
Cause: moisture is trapped and cannot get out.
6. **Smoothing layer that is too thin**  
As a result, the substrate will draw through the final layer.
7. **Do not dust and degrease the substrate**  
Result: risk of detachment problems and cracks.
8. **Flattening layer pre-ironed.**  
Result: this closes the surface and creates an unwanted, non-absorbent surface, which causes stains. The Beton Ciré can be applied directly to the flattening layer because it adheres well to cement and plaster stucco.
9. **Plastering over unstable parts**  
Consequence: detachment + cracking
10. **Weak, unstable walls (such as drywall or metal strut)**  
Result: cracking
11. **Primer insufficiently dry**  
Consequence: detachment problems
12. **Processing temperature too low < 15 degrees**  
Result: irregular drying causes stains
13. **Colour breakdown of the substrate**  
Cause: no white cement used
14. **Smearing too thin**  
Result: substrate appears  
Cause: applying the Beton Ciré too thinly: the layer thickness is 1 mm. With each kilo of mass you can lubricate 1 m<sup>2</sup> (700 grams of cement + 300 grams of resin = 1 kilo = 1 m<sup>2</sup>).
15. **Sagging, roll off or yellowish haze after applying coating.**  
Cause: coating applied too thickly and/or not rolled properly.  
Roll well within 10 minutes, without the addition of coating. Slumps are irreparable.  
Always use the supplied coating and accompanying roller.
16. **White knocked out inner corners**  
Cause: too much coating applied and not properly rolled (see also above).
17. **Poor sealing: horizontal angle, rosettes and s-couplings**  
Result: moisture stains due to rising damp.

